



**LYNFIELD  
COLLEGE**

# NEWSLINK

NEWSLETTER 1 | 5 FEBRUARY 2025

## *From Tumuaki Cath Knell*

*He aha te mea nui o te ao*

*He tangata, he tangata, he tangata*

What is the most important thing in the world?

It is the people, it is the people, it is the people.

### **Kia ora koutou**

Welcome to 2025! To those whānau joining us for the first time an extra warm welcome. We look forward to working with you over the course of the year and meeting on the sports sideline, at culture events or at our parent / whānau meetings. It was lovely to be able to speak with so many of our Year 9 parents in person after the pōwhiri on their first day and I look forward to speaking with the rest of our Year 9 parents at the Year 9 whānau BBQ on Wednesday 26 February.

This year we are making 'Lynfield' history with the largest Year 13 cohort which is also the largest year level in the school! It is impressive to see so many return with clear goals and sound plans for what they are looking to achieve this year.

### **Welcoming new staff**

We have had 16 new staff join us for 2025 and look forward to introducing them to you in subsequent newsletters. Their energy and enthusiasm for their new role has been great to see and they are settling in exceptionally well.

### **Learning is underway in C Block**

Students and staff are excited to finally be able to use the new 30 teaching space, 3 storey new building known as C Block. While it took some interpretation of their timetables to understand where their class was, ground floor, 1st floor or 2nd floor, the consensus is that it is a lovely learning space and awesome to have new furniture and technology. We look forward to showcasing student learning in these new spaces throughout the year.

With C Block now available for use the demolition of B Block, a leaky building, is well underway. This is scheduled to be completed at the end of February, all going to plan. For those who are past students themselves of the College there will be some memorabilia made from timber taken from B Block offered for sale later in the year.

Nga mihi nui

Cath Knell

**Tumuaki | Principal**

## **IN THIS ISSUE**

- *Message from Tumuaki Cath Knell*
- *Year 9 Students Powhiri and Orientation Programme*
- *International Students Orientation*
- *Head Students 2025*
- *Year 13 Study Period*
- *Student Leadership Training*
- *LC School Ball 2025*
- *Welcome to our New Staff*
- *Introduction to 9IL 2025*
- *Year 9 Te Reo Maori Class*
- *ASB Polyfest Leaders' Conf.*
- *LC Robotics Teams in Action*
- *Message from the Nurse*
- *Kowhai Kai Support*
- *Voices of Hope Talk*
- *Lynfield College BYOD 2025*
- *SchoolBridge App*
- *Visual Arts Relocation*
- *C Block Completion Photos*
- *Sports Scene*
- *Uniform & Stationery Shop*
- *Community Events*

## **COMING EVENTS**

**Thursday 6 February**

**WAITANGI DAY**

**Friday 7 February**

**Lynfield College closed**

**Friday 21 February**

**House Sports Day**

**Wednesday 26 February**

**Year 9 Whanau BBQ 6-7.30pm**

**Thursday 6 & Friday 7 March**

**PST Conferences**

---

## *2025 Year 9 Students Pōwhiri and Orientation Programme*

The Year 9s spent their first few days making connections with their classmates and the school. Activities included Getting to Know you activities, and learning about the school values and the range of extra-curricular activities available.

The Hui mai classes came together on Thursday afternoon for tabloid sports, putting their positive collaboration and participation into practice.





---

## *International Students Orientation*

This term, we're delighted to warmly welcome our new international students joining us from Germany, China, Italy, and Japan! We are excited to have you as part of our diverse Lynfield College community, where you'll have the opportunity to make lifelong friendships, immerse yourselves in the rich culture of New Zealand, and experience all that our school has to offer. From exploring our beautiful landscapes to participating in school events and activities, we hope you create lasting memories. Welcome to Lynfield College—your adventure starts here!

Photos from orientation trip to Muriwai (courtesy Vibha and Grace).



---

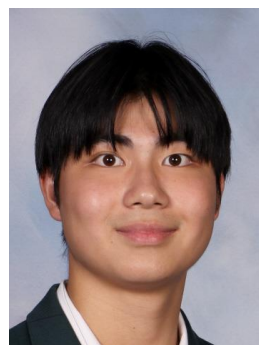
## *Head Students*



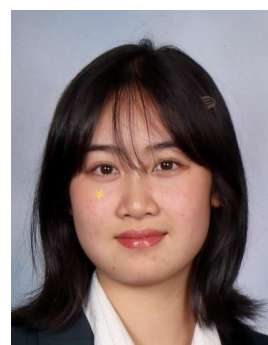
*John Mahe*  
Head Student



*Ateliana Manuha'apai*  
Head Student



*Bill Xie*  
Deputy Head Student



*Jessica Sor*  
Deputy Head Student

---

## *Year 13 Study Period*

Year 13 students who have study first thing in the morning have permission to arrive late to school and go straight to either Hui mai or the next lesson on their timetable. As per previous years Year 13 students may also leave early in the afternoon if they have study in the last block.

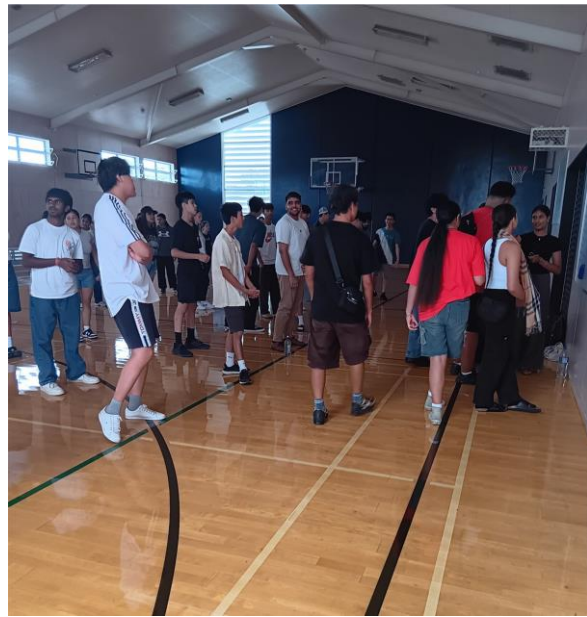
---

## *Student Leadership Training*

On 23 and 24 January the Student Executive members came together for two days of leadership training. We participated in a range of team building activities and were lucky enough to have Sanat Singh (Head Boy 2021) take us through a leadership workshop. This was fantastic and gave us much to think about and time to reflect on our own leadership styles.

Day 2 was spent in our portfolios, goal setting and preparing for events. We were then led by our Cultural Ambassador Danyon Varney, Akeelah Te Rangi and Bella James along with our Young Maori leaders to prepare to welcome in the new Year 9s.

It was a fantastic two days, with a talented group of student leaders all of whom are aiming to 'make a difference' in 2025. We look forward to working with them all! John, Ateliana, Bill and Aziz



---

## *Lynfield College School Ball 2025*

The Ball is an extra-curriculum event, provided by the College to those Year 12 and Year 13 students who meet the criteria to attend. **Attendance at the Ball is a privilege not a right.**

Students should be aware that ticket purchase (Term 2) is conditional on the following:

- Meeting all outstanding obligations to the College
- Having no more than 5% unjustified absences
- Meeting our Code of Conduct
- Having no stand-downs or suspensions in the current year
- Having paid fees owing to the College
- Having presented signed and completed permission forms

Please Note: An application for reconsideration of any of the above conditions may be made to the Principal at the time of ball ticket sales

---

## *Review and Reconsideration of NCEA Exam Papers*

A reminder, that the last day students can apply for a review and reconsideration of exam papers is February 21<sup>st</sup>. See the following link for information and the application process. We advise students to show their teacher the exam scripts before applying. Exam papers were returned to candidates digitally at the end of January.

[New Zealand Scholarship reviews and reconsiderations](#)



---

## *Mihi Whakatau for New Staff*



---

## *Welcome to our new Staff*

***We are delighted to have the following new staff at the College and look forward to introducing them over the next few issues of NewsLink.***

Susan Su, Mathematics

Viney Shandil, Mathematics

Mike Landeg, Health and PE

Lucy Zhang, Mathematics

Stefanie O'Brien, ESOL

Jamilah Khan, Commerce

Jennia Deng, Arts

Mohammed Rizwan Ali, Mathematics, Commerce

Khusbhu Ali, Mathematics

Anna McPhie, Health and PE

Nick Geor, Technology

*Johnathon* Gee, Health and PE

*Maysoon Al-Tureihi*, Senior Science Laboratory Technician

Xavier Fenton, Learning Assistant

Natalija Gudelj, Learning Assistant

Tony Worth, English

***Welcome back to the following returning staff***

Sandy Harris, Deputy Principal

---

## **Introduction to 9IL 2025**

The Innovative Learning program has collaborative learning opportunities that blend the curriculum with essential 21st-century skills. This term, our theme is *Tūrangawaewae*—a place to stand—encouraging students to explore identity, belonging, and their connection to the world around them. With our move into a state-of-the-art building and facilities, students and staff now have a dynamic learning environment. Our IL team is excited to guide students through interdisciplinary projects that bring learning to life. Below is a photo of our team and students engaging in these rich learning experiences.

*Below left: Day 1 activity, Who am I?*

*Below right: Ms Wong, Mr Satuluri, Mrs Shahsavar, Mrs Carswell, Mrs Hardy, Mr Ilaua*



---

## **Year 9 Te Reo Maori**

Yr 9 Te Reo Maori combine to do whakawhanaungatanga in the whare.

For the 1<sup>st</sup> day on timetable akonga combined classes to introduce themselves in Te Reo Maori at the school whare ako, It was an awesome way to start our year and have the whare full.

*Classes pictured 9MAO-LGA and 9MAO-PKR*



---

## **ASB Polyfest Leaders' Conference 2025**

John Mahe, Head Student and Danyon Varney, Cultural Ambassador, attended the ASB Leaders' conference at Auckland War Memorial Museum on Wednesday 22 January. Polyfest will celebrate 50 years in 2025. Ka nui te mihi ki a korua mo to tautoko o tenei kaupapa.

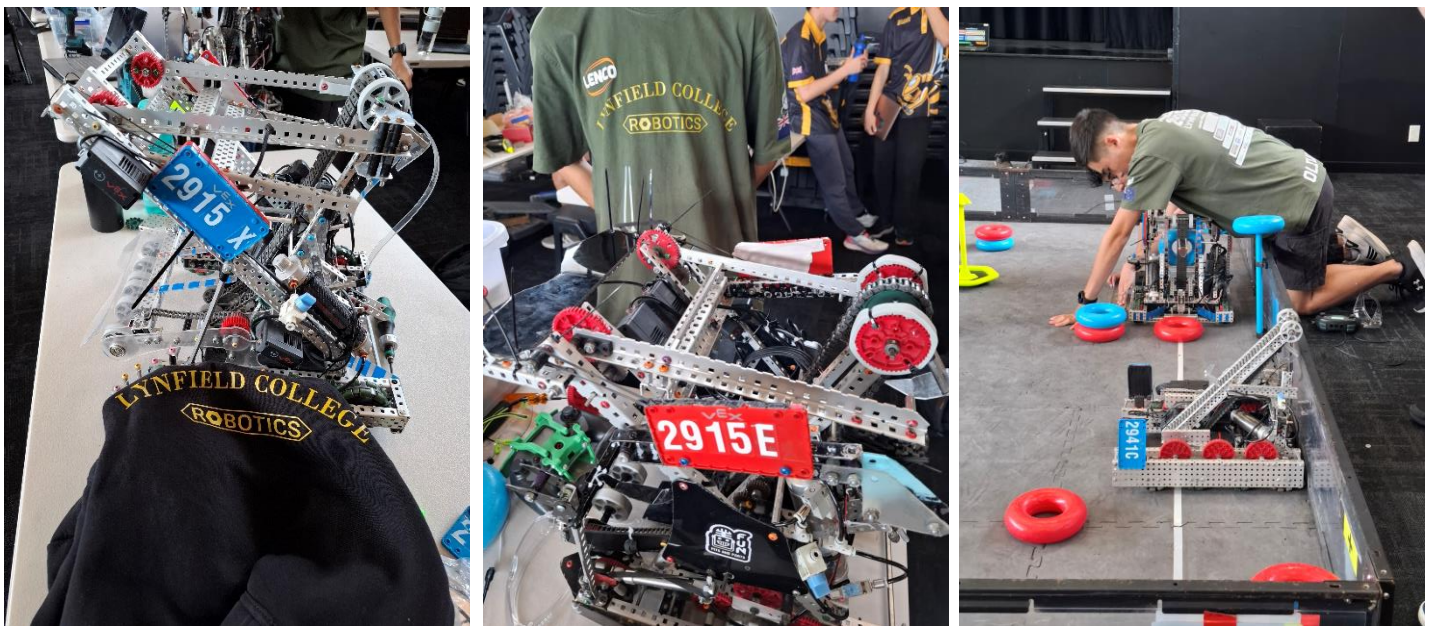




---

## *Lynfield College Robotics Teams in Action*

Three Lynfield College Robotics teams were in action last Saturday at Onehunga High School in the 9th scrimmage of 2024/25 season. Twenty seven teams were competing in this Auckland event where after the qualification rounds, teams formed 2 robot alliances to compete against other alliances in the elimination finals rounds. At the end of the qualification rounds Lynfield teams were ranked 1<sup>st</sup>, 2<sup>nd</sup> and 14<sup>th</sup>. They all formed alliances with other schools and continued into the elimination rounds. We lost one team in the quarterfinals and another in the semifinals. Our remaining team made it to the finals and were triumphant, winning the tournament with a very convincing score. They have one more Auckland scrimmage this coming weekend before the NZ National Championships on the 15<sup>th</sup> and 16<sup>th</sup> of February being held here at Lynfield College in the Lower Gym. There will be approximately 80 teams from all over New Zealand competing at the National Championships, which is quite a spectacle to see. The NZ Nationals is free for spectators and our teams would love to see you there. There will also be a coffee van and BBQ fundraiser at Nationals and we would enjoy the support for our teams competing there.



---

## *A message from the College Nurse*

My name is Francie Duncan and I am a Registered Nurse working within Lynfield College's Health Centre during school hours. Please do not hesitate to contact me if you have any information or feedback that you believe might assist me to better support a student attending Lynfield College with their unique health needs.

My email is [nurse@lynfield.school.nz](mailto:nurse@lynfield.school.nz)

Please be aware that before leaving school due to illness, students need to visit the Health Centre whereupon caregivers will be contacted, and a plan made for the student to leave the school grounds safely.

---

## *Please Help Support Kowhai Kai*

Kōwhai Kai is a student wellbeing programme that supports Lynfield College students and their whānau going through hardship. At the start of lunch time, kai is provided in D12 for students who do not have the means to bring lunch to school. If you want to find out more, you can contact Mr Dye, Deputy Principal [edye@lynfield.school.nz](mailto:edye@lynfield.school.nz). This has been able to operate thanks to the generosity of our community. We would love to make connection with new corporate sponsors.

**DONATIONS CAN BE MADE TO: LYNFIELD COLLEGE, 12-3049-0248027-00, REF: KŌWHAI KAI**

---

## Voices of Hope School-Wide Talk

On the 25<sup>th</sup> February Genevieve Mora, Jazz Thornton and their team are coming into school to share their message of hope. Parents/Caregivers you may not be aware but Jazz and Genevieve are big on social media – Jazz was on Dancing with the stars and Young New Zealander of the Year 2023 and both were awarded 2023 Forbes 30 under 30.

Voices of Hope speakers share personal stories of their experiences with mental health challenges, seeking help, and the tools and strategies they used throughout their journey. Our talks focus on three primary areas:

**Anti-Bullying:** We are committed to promoting a community of kindness and respect, and our talks address the impact of bullying on mental health.

**General Mental Health:** Our speakers share their own personal lived experiences with mental health challenges, emphasising the importance of seeking help and the tools and strategies they used along their mental health journey.

**Encouraging Help-Seeking Behaviours:** We aim to normalise help-seeking behaviours and reduce the stigma surrounding mental health issues, encouraging students to reach out for support when needed.

Our talks typically last between 20 to 40 minutes and are tailored to different age groups, ranging from years 7 to 13.

This is a rain check from last year! Just like last year we will send out consent forms shortly.

---

## BYOD at Lynfield College 2025

We expect each student to have their own device to complement their learning here at Lynfield College. Basic criteria for a device can be found [e-Learning \(lynfield.school.nz\)](https://www.lynfield.school.nz/e-learning). There are a number of different retailers that provide devices for purchase.

We understand that a number of families are not in a position to provide their child with their own device. To support this we run a loan scheme where a device can be loaned from the school for a \$30 refundable deposit. Students will be provided information about this in their Hui mai classes, or you can contact Mr Dye, Deputy Principal [edye@lynfield.school.nz](mailto:edye@lynfield.school.nz) or Mr Winn, Deputy Principal [rwinn@lynfield.school.nz](mailto:rwinn@lynfield.school.nz) should you have any questions.

---

## Have you downloaded our SchoolBridge App yet?

This gives you easy access to report an absence, see attendance, results, ability to pay any fees, see sports draws, and report.

Information about the app and login details can be found [here](#)



<https://apps.apple.com/us/app/schoolbridge/id1563090571>

<https://play.google.com/store/apps/details?id=com.inboxdesign.SchoolBridgeApp>



---

## Do you have a piano for sale?

The Lynfield College Music Department is looking to purchase a good quality, well looked after Upright Piano for our talented students. A piano that has been maintained and tuned regularly would be ideal. If you or someone you know are looking to sell a piano then email [gmclarin@lynfield.school.nz](mailto:gmclarin@lynfield.school.nz) with information and photos of the piano.



---

## *Visual Arts Relocation*

With B Block being demolished, the visual arts department found themselves relocating to another part of the school. You can now find us in L Block. We have three newly refurbished rooms that are suitable for wet media processes and two new computer suites for Design and Photography.

Special thanks to Rob Skeen, Business Manager and Bruce Carter and his team for doing a fantastic job over the holidays.



---

## *C Block Completion Photos*

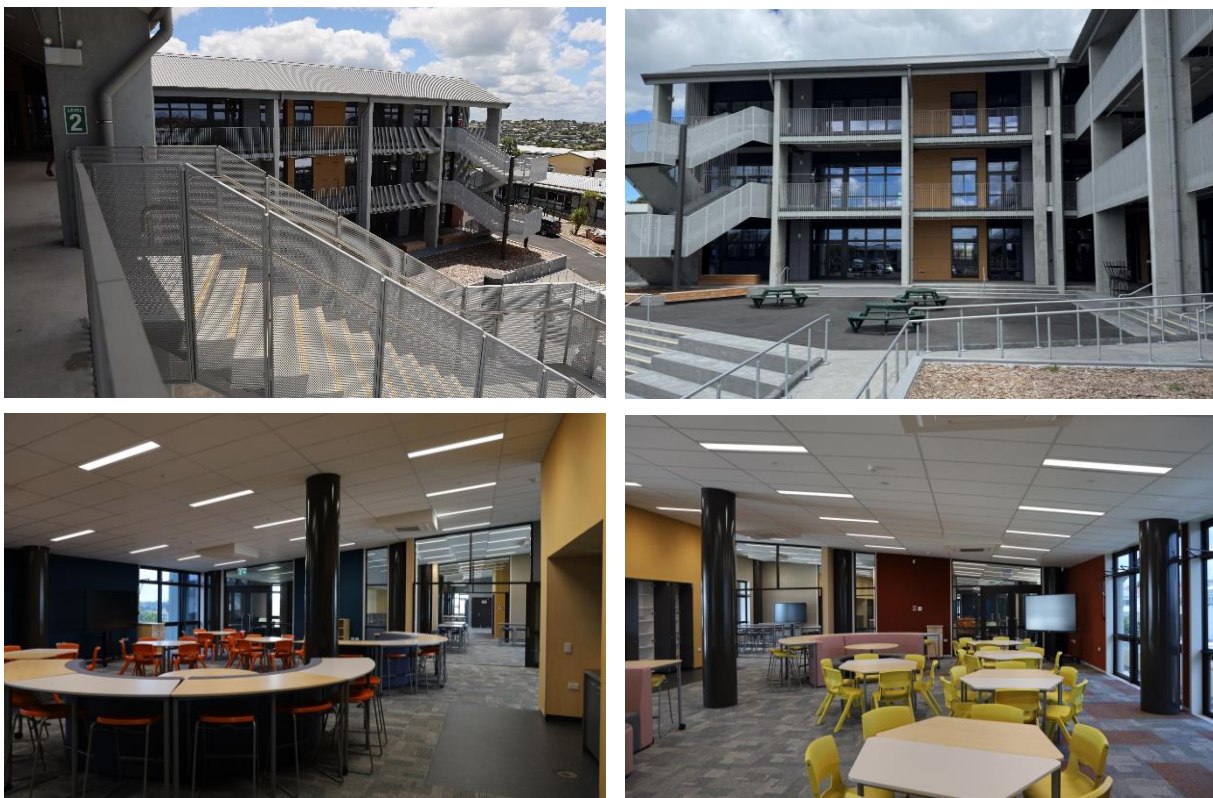


Photo credit: Brewer Davidson Architects

---

## Individual Sports Honours

### RAJAL SHARMA

Over Auckland Anniversary Weekend, Rajal competed in the Auckland District Archery Championships held at Mountain Green Archery Club. He came away with 2 Silver medals! One in the U18 Compound Men's Division and another in the Teams Matchplay round. Congratulations Rajal!



### NABEEHA KAMRAN

### AANYA PATEL

Nabeeha and Aanya were both selected by the Auckland South Asian Under 19 team to compete in the Rangatahi Cricket Festival. Congratulations!



Nabeeha Kamran



Aanya Patel

*If your son and/or daughter has achieved representative status (Auckland or NZ) or has competed in such events the Sports Office would very much like to hear about this. Please either ask them to bring proof of the team they made/ level they achieved (eg. certificate, letter of selection etc) so we have the exact wording of their achievement, or email these details to [sport@lynfield.school.nz](mailto:sport@lynfield.school.nz)*

---

## Sports Scene

### HOUSE COMPETITIONS

**House Sports Day** for the whole school will be Friday 21 February. Students will hear more about this in their first house meetings early Tuesday next week.

### *Helping our students enjoy sport*

We are always appreciative of any help our school community is able to offer whether it is as a coach, manager, ref or umpire of a team. ***If you have skills in any sport and can spare some time to work with our students in some way, please contact the Sports Office:***

Phone: 6270600 ext 595, Email: [sport@lynfield.school.nz](mailto:sport@lynfield.school.nz)

### TEAM TALK

#### SUMMER SPORTS

Weekly summer competitions begin with 1<sup>st</sup> XI boys cricket this weekend then volleyball, all other cricket, tennis, archery and orienteering will start in the next few weeks.



**Sign-ups for these sports are done at the Sports Office. It is essential that students watch Schoolbridge frequently and thoroughly as all calls for sign-ups will be made using this messaging system.**

Please remember, all team members are required to wear an appropriate sports uniform which the Sports Office will supply:

- **Team fees can be paid online** (either via the parent portal or direct credit), **by eftpos** or in cash.
- **Payments by eftpos can be made at the Accounts Office**

### **WINTER SPORTS**

***Trials will begin very soon.*** All notices concerning sport are on Schoology. Students need to check the notices on Schoology at least twice/day so they don't miss out on being a part of something they will enjoy.

We need your help to manage, coach or transport one of our teams this year, in order to provide sporting opportunities to the large number of Lynfield students wanting to play sport. Remember, to manage a team you do not need knowledge of the sport, just to be a channel for communication between coach and players as needed and help organise (not necessarily provide) transport to games.

**We will not enter a team into a competition unless it has both a coach and a manager.**

If you or anyone you know is able to help us in any way, we would really like to hear from you. There are plenty of openings available!! Please contact the Sports Office 627 0600 ext 595 or email Kieren Chhiba (Sports Co-Ordinator) [sport@lynfield.school.nz](mailto:sport@lynfield.school.nz)

---

## **Uniform & Stationery Shop**

### **HOURS**

The Uniform and Stationery shop is open to all students on site for their uniform and stationery needs during interval and lunchtime Mondays to Thursdays, and on Fridays before school at 8am and interval.

We are not open on Saturday and Sunday, Teacher Only Days or the between term holidays.

**Parents can attend the shop at the following times:**

Monday – Thursday 10.00am – 12.00pm and 12.30pm – 1.30pm

Friday 8.00am – 11.30pm

### **SECOND HAND CLOTHING**

The Uniform and Stationery Shop also sells second hand items. We ask that if you wish to purchase the second hand items, you do not come during student's morning tea or lunchtimes.

**We have secondhand uniform items available for purchase. These do not cover the full size range. Proceeds from secondhand uniform sales go to our hardship fund to support students in need.**

### **ONLINE ORDERING**

Online ordering is available through our website <https://lynfield.school.nz/shop.html>. Payment can be made by direct credit or credit card and students onsite are able to collect the items from the shop during the above times. Orders are usually ready the next day.

### **RETURNS POLICY**

We require a purchase receipt, tags and the skirt "runner stitch" to still be in garments to process returns. Please be aware that we can only return items up to 90 days from the date on your receipt.

### **LOST PROPERTY**

If your child has lost uniform items, please ask them to check the Lost Property bin outside the uniform shop.

**PLEASE REMEMBER TO NAME YOUR CHILD'S UNIFORM.**



Young Māori and Pacific Pride Leaders present...

# IPU TI

## WEDNESDAYS

WEEKLY ACADEMIC WORKSHOP

**Open to all students!**

- Unfinished work?
- Due dates looming?
- Need help?

**3.15 PM - 4.30 PM**  
**JOIN US IN 12/13 (END OF CORRIDOR IN THE UPPER GYM)**

---

## Community Events

### YOUTH MP FOR 2025

Applications are now open for someone ages 16 – 18 years old to representative the Mt Roskill electorate as Youth MP in the Youth Parliament 2025 programme. The successful applicant would draw on their own experience and represent the things that are important to them and the community, gathering feedback from their peers and community and present those perspectives to Parliament. Then report back on their experience.

The programme will run from Monday 28 April to Friday 29 August 2025, with a two-day event taking place on Tuesday 01 and Wednesday 02 July 2025, at Parliament in Wellington. The four-month programme allows young people to actively work and be heard on topics and issues they're passionate about. It's an opportunity for students to experience the political process and learn how government works, while expanding their leadership skills.

All participants will receive training, pastoral support, and guidance along the way.

Students aged 16 to 24 years also have an opportunity to apply to be a Youth Gallery Press member, selected by a panel through the Ministry of Youth Development.

Email applications to [priscilla.dickinson@parliament.govt.nz](mailto:priscilla.dickinson@parliament.govt.nz) outlining why they should be selected as Youth MP, any relevant skills/experience and one thing they would prioritise as Youth MP for Mt Roskill (please note that applicants aren't required to support the political views of their MP).

Close date is 12noon, Friday 28 February 2025. Applications will be reviewed in March and the winner notified via their school on or before 31 March 2025.

More information can be found on the [Ministry of Youth Development website](#) and the [New Zealand Parliament website](#)

### MT ROSKILL JOBS FAIR – TUESDAY 8 APRIL, THE Y LYNFIELD YOUTH AND LEISURE CENTRE

*An opportunity for students to talk to local businesses about the products and services they provide and discuss their skills. The aim is to enable students to identify future career pathways and create opportunities for part-time work.*

### ART SHOWCASE – THE Y YOUTH AND LEISURE CENTRE

*An opportunity for students to showcase their artwork for parents and the wider community to enjoy.*

### Priscilla Dickinson | Communications Adviser

Office of Dr Carlos Cheung MP | Member of Parliament for Mt Roskill

Unit 8, 80 Carr Road, Mt Roskill, Auckland 1042

[priscilla.dickinson@parliament.govt.nz](mailto:priscilla.dickinson@parliament.govt.nz)